



TravCom CS

ClientMajic

Contents

System Requirements.....	1
Installing TravCom CS and ClientMajic.....	2
Installing Microsoft SQL Server 2005 Express	4
Connecting to a Database.....	6
Creating a Data Source	6
Creating a Database	6
Converting Existing Data.....	8
Connecting to an Existing Database	8
Logging into TravCom CS and ClientMajic.....	8

Copyright (C) 1983, 2008
Travel Computer Systems
4256 Overland Ave.
Culver City, CA 90230
Telephone (800) TRAVCOM
FAX (310) 558-3160

Warning:

This software and setup guide is protected by all applicable copyright laws. The details of permitted uses of the product are set forth in the program licensing agreement. Any unauthorized duplication of the TravCom CS software or this setup guide is strictly prohibited.

System Requirements

The following are the minimum requirements for any computer that will be running TravCom CS:

Client PC

The Client PC is the computer which will be running the TravCom CS program. The minimum requirements for this computer are:

- Operating System: Windows 98, 98 Second Edition, ME, 2000, XP, NT 4 (service pack 4 or higher)
- Processor: 300 MHz ¹
- Memory: 32 MB ¹
- Hard Drive: 75 MB ¹
- Additional: CD-ROM drive, serial port for interface, printer (laser printer recommended)

Database Server PC ²

The Database Server PC is the computer which will be running the database server software. The minimum requirements for this computer are:

Microsoft SQL Server 2005 Express (included)

- Operating System: Windows 2000 Service Pack 4; Windows Server 2003 Service Pack 1; Windows Small Business Server 2003 ; Windows XP Service Pack 2
- Processor: 600 MHz minimum; 1GHz or faster recommended
- Memory: 192 MB minimum; 512 MB or more recommended
- Hard Drive: Program files: 525 MB; Data files: 7 ½ MB per \$1 Million ³
- Additional: CD-ROM drive

Microsoft SQL Server 2000 or higher (purchased separately)

- Operating System: Windows 2000 Service Pack 4; Windows Server 2003 Service Pack 1; Windows Small Business Server 2003 ; Windows XP Service Pack 2
- Processor: 600 MHz minimum; 1GHz or faster recommended
- Memory: 192 MB minimum; 512 MB or more recommended
- Hard Drive: Program files: 525 MB; Data files: 7 ½ MB per \$1 Million ³ Additional: CD-ROM drive (See Microsoft's website at <http://www.microsoft.com/sql> for more information on SQL Server and the requirements)

¹ You may use the same computer as the client PC and the database server. However, for best performance it is recommended that you increase the processor speed and memory requirements. A minimum recommendation is a 750 MHz processor and 64 MB memory. The minimum hard drive requirements are those for the Client PC as well as the Database Server PC combined.

² The computer used as the database server can either use MSDE 2000 (Microsoft Desktop Engine), Microsoft SQL Server 2005 Express, Microsoft SQL Server 2000, or Microsoft SQL Server 2005. Microsoft SQL Server 2005 Express is included with TravCom CS and supports a maximum database size of 4 GB (approximately \$500 million. If you expect to grow beyond this limit then you are responsible for purchasing a licensed copy of Microsoft SQL Server from Microsoft or another third party vendor. Initially you can use Microsoft SQL Server 2005 Express and upgrade to Microsoft SQL Server when you have reached the limit.

³ Space for data files is an estimate. The estimate is based on 350,000 sales transactions at an average fare of \$350 per transaction. The estimate also factors in supporting transactions such as cash receipts and cash disbursements as well as a database of 2000 client, vendor, and agent profiles.

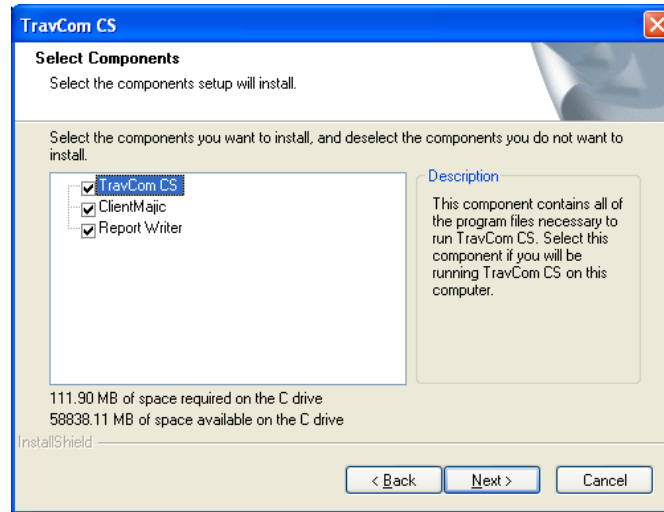
Installing TravCom CS and ClientMajic

Welcome to the TravCom CS/ClientMajic Setup Guide. This booklet will give you simple instructions to help you install TravCom CS and/or ClientMajic on your personal computer or on a network. To begin the installation insert the TravCom CS/ClientMajic Installation CD into your CD-ROM drive and close the drive door. The *TravCom CS/ClientMajic Install* application should start automatically. To install TravCom CS and ClientMajic, click the **Install Products** button and then click **Install TravCom/ClientMajic**. The Setup program should then start. If you have downloaded the setup from the TravCom website then just run the downloaded file and it will automatically start the Setup program.

After the Setup program starts the Welcome screen will appear. Click **Next** to continue with the setup.

Read through the TravCom CS license agreement. Click **Yes** to accept the license agreement and continue with the setup.

The screen below allows you to select which components you would like to install:

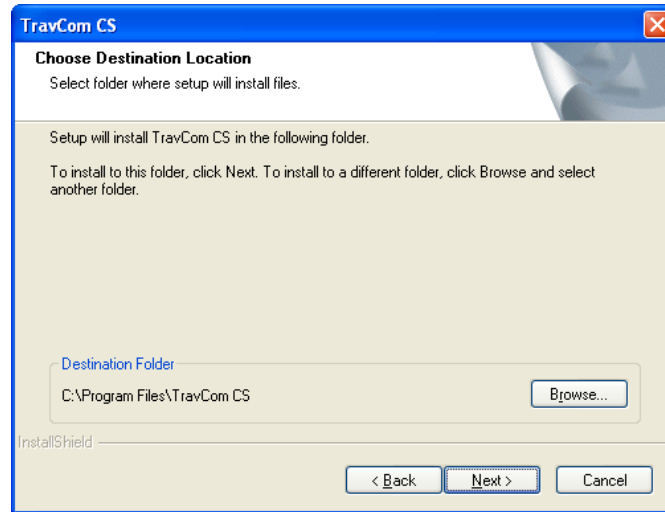


- The *TravCom CS* component contains the TravCom CS program and all utilities necessary to run TravCom CS. You must install this component if you plan to run TravCom CS on the current computer.
- The *ClientMajic* component contains the ClientMajic program and all utilities necessary to run ClientMajic. You must install this component if you plan to run ClientMajic on the current computer.
- The *Report Writer* component contains the TravCom CS Custom Report Writer. Select this component if you would like to build custom reports based on the TravCom CS or ClientMajic data on this computer.

Next, select the location in which to install the TravCom CS program files. The default folder is C:\Program Files\ TravCom CS. If you would like to change the location click the **Browse** button and select the desired location.

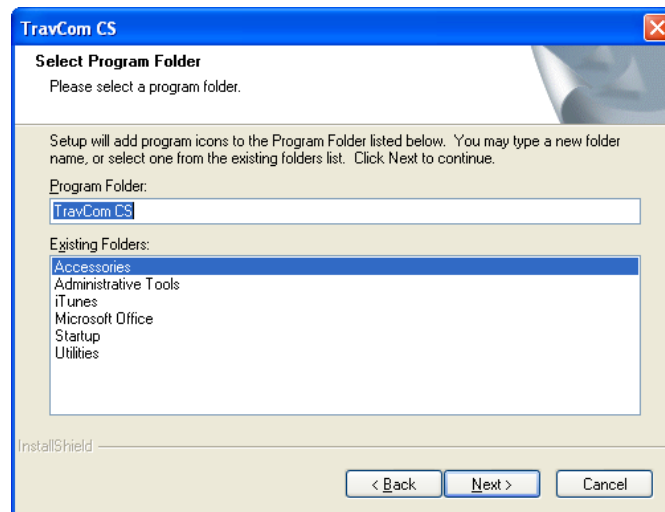
Note: It is recommended that you leave the location as the default. In case you ever need assistance from the TravCom Help Desk the support representative will know where TravCom CS has been installed.

After selecting the destination folder click **Next** to continue.



The next screen allows you to select the program folder in which to install the program shortcuts. The default is TravCom CS. These shortcuts in the program folder are where you can select to run TravCom CS, ClientMajic, or any of the utility programs. To access the program folder click Start > Programs and then select the TravCom CS program folder for a list of all the program shortcuts.

After selecting the program folder click **Next** to continue.



The setup program is now ready to begin installing the selected components. A summary of your selections will appear. If the summary list looks correct click **Next** to begin the installation. Otherwise, click the **Back** button to modify any of the settings.

The setup program will begin installing the components you have selected. When the setup is complete you might need to reboot your computer.

If you will be installing TravCom CS or ClientMajic on more computers then repeat these installation procedures for each computer.

Installing Microsoft SQL Server 2005 Express

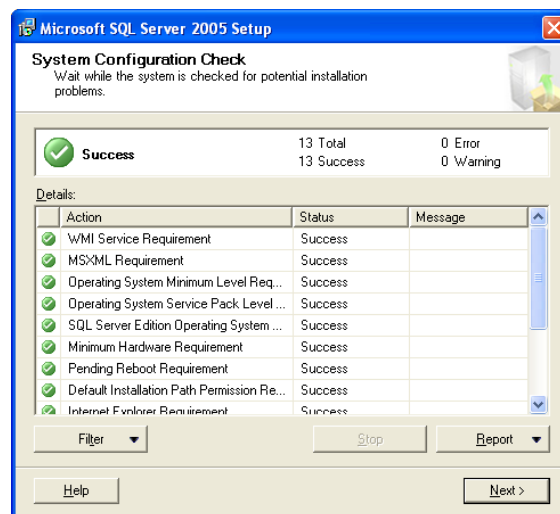
In order to run TravCom CS or ClientMajic you will need to install a database server. Microsoft SQL Server 2005 Express is a free edition of Microsoft SQL Server 2005 which can be installed for database sizes of not more than 4 GB. If your database grows to be larger than 4 GB then you will need to purchase a license for the complete version of Microsoft SQL Server.

The database server only needs to be installed on one computer. This can either be a workstation or a server that your agency might already have. If you already have a version of Microsoft SQL Server installed then you can use that as your database server and will not need to install another version. All workstations that are running TravCom or ClientMajic can then connect to the database on this server.

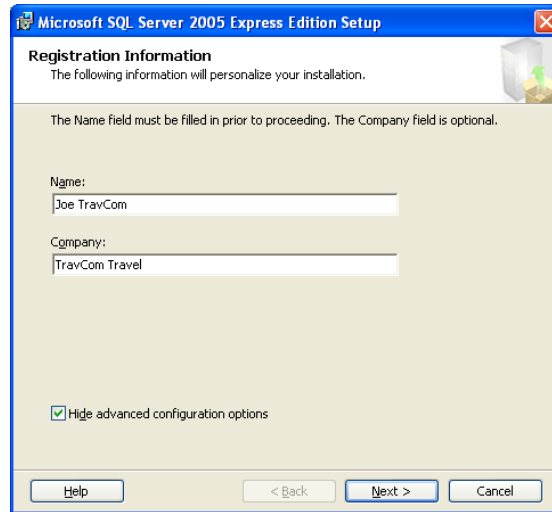
To install Microsoft SQL Server 2005 Express insert the TravCom CS/ClientMajic Installation CD into your CD-ROM drive and close the drive door. The *TravCom CS/ClientMajic Install* application should start automatically. To install SQL Server Express 2005, click the **Install Products** button to view the products list. SQL Server 2005 Express requires that the Microsoft .NET Framework 2.0 is installed on the computer before you can continue the installation. If you do not already have the .NET Framework 2.0 installed then click the **Install .NET Framework 2.0** button first. This will automatically install the .NET Framework 2.0 from the CD. After the .NET Framework 2.0 installation is complete you can then click the **Install SQL Server 2005 Express** button to begin the installation of the server.

Note: If you downloaded SQL Server 2005 Express directly from the TravCom website then you will need to download and manually install the Microsoft .NET Framework 2.0 first, if necessary.

The installation of SQL Server 2005 Express will extract the necessary installation files and then requires you to accept the licensing agreement. It will then continue to configure the installation components and perform a System Configuration Check:



If all components check out without any problems then you can continue with the installation. The first screen prompts you for your registration information. Enter your name and agency name to register this copy of SQL Server 2005 Express:



The next screen prompts you for the components to install, and the location. Leave the defaults and click **Next**. The next screen prompts you for a security password for the installation of SQL Server 2005 Express. Leave the authentication mode as *Mixed Mode*, enter a strong password, then reenter that password. It is important that you remember this password as it will be required to create your TravCom database as well as perform other maintenance functions on this installation of SQL Server 2005 Express.

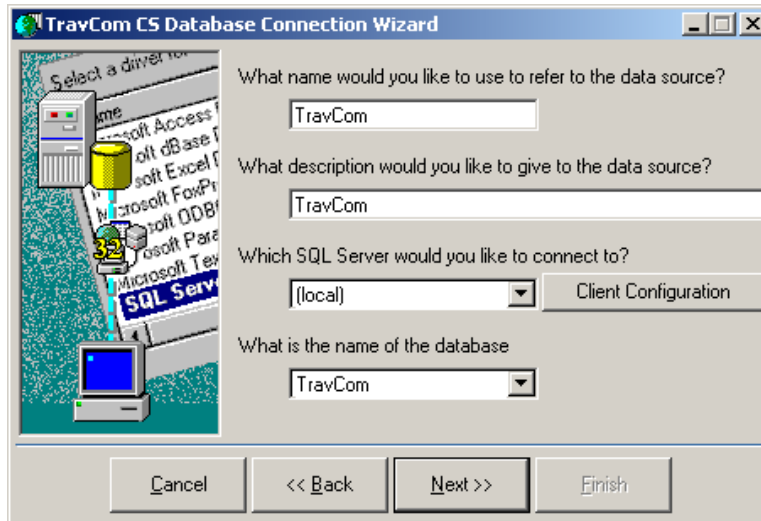
Continue through the rest of the setup and accept all of the defaults. The installation of SQL Server 2005 Express will begin. When complete you might be required to reboot your computer.

Connecting to a Database

Before using TravCom CS and ClientMajic you must first create a database and then tell TravCom CS and ClientMajic where that database is located. This is done by using the *Database Connection Wizard*. Run the Database Connection Wizard by selecting *Start > Programs > TravCom CS > Database Connection Wizard*. The Database Connection Wizard will guide you through the process of creating the database and specifying the necessary information for connecting to the database.

Creating a Data Source

TravCom CS and ClientMajic use a technology called ODBC (Open Database Connectivity) to connect to a database. An ODBC Data Source contains the necessary information needed to connect to the database, such as the name of the server and the name of the database. The Database Connection Wizard will prompt you for this information. Following is a description of each field necessary for creating the ODBC Data Source.



Data Source Name

This is the name you would like to call the Data Source. When you log into TravCom CS or ClientMajic for the first time you will be prompted for this Data Source name.

Description

This is a description for the Data Source. You can enter anything you like into this field.

SQL Server Name

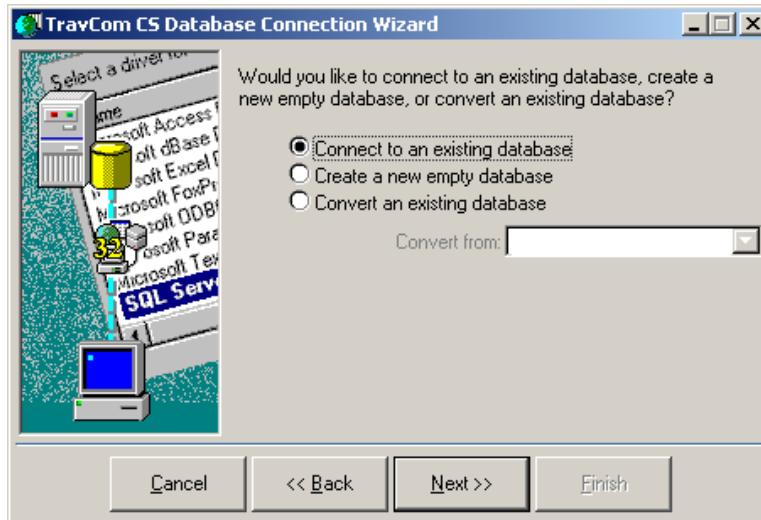
This is the name of the computer which contains the database server files and is running Microsoft SQL Server. Generally this is just the name of the computer on the network. For instance, if the computer name is NetworkServer then you will enter NetworkServer in this field. . Alternately you can enter the IP address of the server in this field. Check with your network administrator for help with this field if necessary. If the database server is the current computer you are working on then you can leave the SQL Server Name as (local). This tells the ODBC Data Source that the database server is on the local computer.

Database Name

This is the name of the database on the SQL Server computer. If the database has already been created you can then click the drop-down button to display the list of databases.

Creating a Database

Before any installation of TravCom CS or ClientMajic can be run a database must be created. The remaining screens of the Database Connection Wizard will allow you to create the database on the server.



There are three options for creating or connecting to the database:

Connect to an existing database

Use this option if the database has already been created from another computer. The database will only need to be created once. All other workstations can connect directly to the existing database.

Create a new empty database

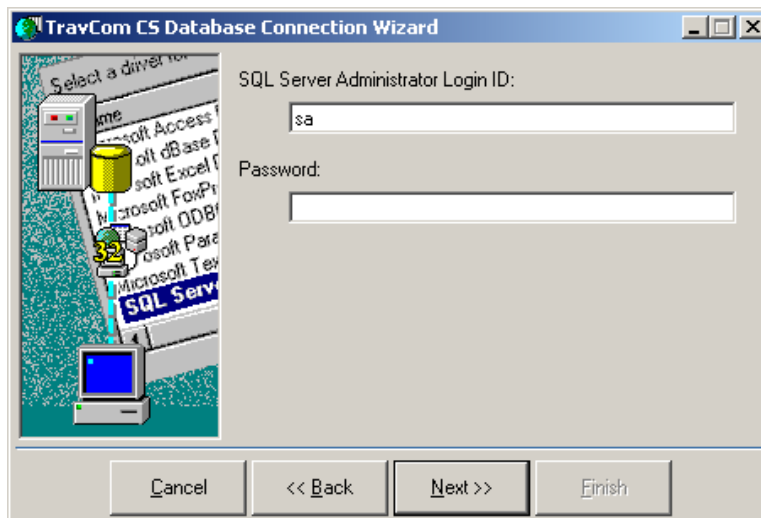
Use this option if you are starting TravCom CS or ClientMajic with a fresh, clean installation. The database will be created with a set of preloaded data. There will not be any sales or history information created.

Convert an existing database

Use this option if you are converting data from an existing back-office or mid-office system to TravCom CS and ClientMajic. Select the existing system from the drop-down list of options.

Note: The database only needs to be created once from either the server or one of the workstations, whether you are creating a new, database or converting an existing database. If TravCom CS or ClientMajic is installed on multiple computers then create a new database or convert existing data from only one of the computers. Then all other computers will select the option to Connect to an Existing Database.

If you selected to create a new empty database or convert an existing database it is necessary to have the SQL Server Administrator login and password.



For a new SQL Server 2005 Express installation the Administrator Login ID is **sa** and the password is the password you entered when installing SQL Server 2005 Express. For existing SQL Server installations you will need to contact your network administrator for this information.

The last step is to click **Finish**. The Database Connection Wizard will take all the information that you entered, create the ODBC Data Source, and if selected create the database and convert any existing data. A message box will appear when the operation is complete.

Converting Existing Data

If you are converting to TravCom CS or ClientMajic from another system the Database Connection Wizard allows you to convert your old data to TravCom CS or ClientMajic for several other systems. Run the Database Connection Wizard and follow the steps for connecting to a database. When you reach the screen with the three options for connecting to an existing database, creating a new empty database, or converting an existing database, select the last option to convert an existing database. Click **Next** and a screen will appear prompting you for the location of the existing database. Click **Browse** to select the location and follow the remaining instructions on the screen. These instructions will be different depending on the existing data from which you are converting. Follow the remaining steps for connecting to a database to complete the conversion of the data.

Note: The database only needs to be converted from one of the computers. If TravCom CS or ClientMajic is installed on multiple computers then convert existing data from only one of the computers. Then all other computers will select the option to Connect to an Existing Database.

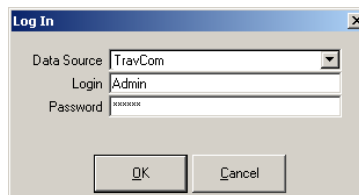
Connecting to an Existing Database

If you have installed TravCom CS or ClientMajic on multiple computers it is necessary to create the database from only one of the computers. Run the Database Connection Wizard and follow the steps for creating the database. After the database has been created, either a new empty database or a database converted from another system, then all other computers must connect to this existing database. From the Database Connection Wizard enter the SQL Server and the Database Name on the first screen. The Database Name must be the exact same name used when creating the database. Then on the next screen just select the first option to connect to an existing database. Click **Next** and then **Finish**. The ODBC Data Source will be created and you are ready to log into TravCom CS and ClientMajic.

Logging into TravCom CS and ClientMajic

Before using TravCom CS or ClientMajic every user will need to log into the database. Every user will need a unique Login and Password. TravCom CS and ClientMajic come preloaded with one Administrator user. The Login is **Admin** and the Password is **master**. Additional user logins can be added in the TravCom CS and ClientMajic Setup functions. Refer to the online help for information on creating users.

To login to TravCom CS or ClientMajic select the Data Source that was created in the Database Connection Wizard. Then, enter the Login and Password for the user.



If the Login and Password match that of a valid user then you will see the TravCom CS or ClientMajic main menu screen. Enter the registration number provided to you by TravCom to register your copy of the program.

Congratulations! You have successfully installed TravCom CS and ClientMajic, created an ODBC Data Source, created the database, and logged into the system. You are now ready to begin setting up the preferences and features of TravCom CS and ClientMajic to use on a regular basis.

For further information on setting up TravCom CS and ClientMajic please refer to the Getting Started section of the online help. You can access the online help from the Help option of the main menu, or hit the F1 key on your keyboard from anywhere within the program for help on that topic.